



Secure Gateway Solution

Turnkey SMB VPN/Firewall Gateway

for AMCC Platforms

TeamF1's **Secure Gateway Solution** is a comprehensive turnkey software package that combines a rich set of field-proven, standard components with an array of customizable options to provide OEMs/ODMs the ultimate in product flexibility. A member of TeamF1's **SMBWare** family of innovative prepackaged solutions, the **Secure Gateway Solution** enables OEMs/ODMs to deliver leading-edge VPN/firewall/router devices to the small-to-medium business (SMB) market in record time at far less risk than traditional development approaches. Devices built around the **Secure Gateway Solution** offer end-customers ironclad, advanced networking security; easy-to-use device management features; and multiple gateway options.

TeamF1's **Secure Gateway Solution** is available preintegrated and pre-ported to AMCC's Sequoia evaluation kit, which features the PowerPC® 440EPx embedded processor. The integrated hardware/software solution acts as a complete field-tested reference platform for secure gateway applications such as VPN/firewall/router devices and wired/wireless gateways in a production-ready package.

Flexible connectivity

With the **Secure Gateway Solution**, OEMs can build gateways between multiple LAN, WAN, and DMZ interfaces plus any other security zones of several different types. WAN interfaces can include DSL, cable modem, Ethernet,

Features & Benefits

- ❖ Proven **TeamF1** software components, preintegrated on AMCC's evaluation platform, lessen OEMs' risk.
- ❖ Comprehensive set of features packaged to provide full customization of devices.
- ❖ Advanced protocols (IPsec VPN, SSL, etc.) provide ironclad networking security features.
- ❖ Management features make it easy to configure VPN tunnels.
- ❖ Multiple gateway options enable OEMs to build more flexible devices.
- ❖ Performance features leverage hardware acceleration in AMCC's Turbo Security Engine.
- ❖ Branding options offer a cost-effective, customized look and feel.

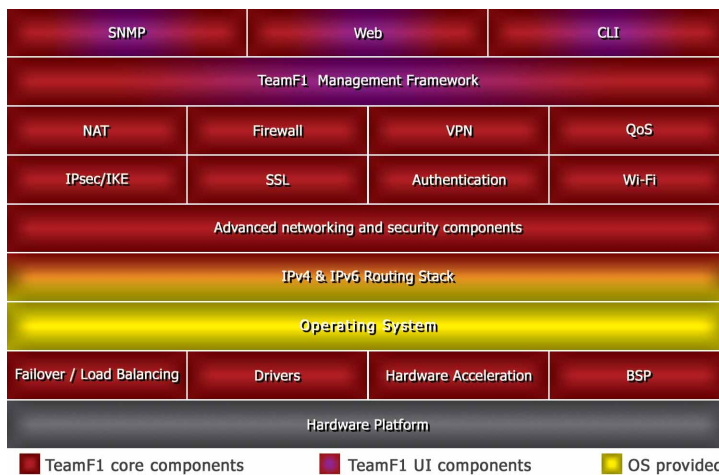


Fig 1: Example of software modules in a Secure Gateway Solution.

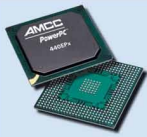
Seamless Integration on AMCC Platforms

AMCC's PowerPC 440EPx processor in the Sequoia platform includes a Turbo Security Engine to accelerate processing of standards-based security protocols such as IPsec and SSL. TeamF1's **Secure Gateway Solution**'s advanced wired secure networking and Draft 802.11n secure access point features - available on the Sequoia platform - make it easier for OEMs/ODMs to develop best-in-class wired and wireless networking products and bring them to production in the shortest time possible.

cellular data (3G) links, or even a Wi-Fi® client link. The **Secure Gateway Solution** supports any combination of these examples, as well as auto failover from one ISP to another and load balancing between multiple network interfaces on the WAN side.

Ironclad networking security

- ❖ IPSec VPN provides secure, site-to-site VPN tunnels for, say, branch office workers, telecommuters, or "road warriors."
- ❖ Stateful packet inspection (SPI) firewall blocks unwanted Internet traffic such as denial of service (DoS) attacks, logs security events and sends alerts to administrators.
- ❖ Network address translation (NAT) presents only one IP address to the Internet, preventing outside users



AMCC
PowerPC

AMCC's PowerPC® 440EPx embedded processor provides customers with a highly integrated, low-cost, low-power system-on-chip (SoC) solution delivering gigabit Ethernet, security acceleration, and USB support.

With speeds of up to 667 MHz, support for floating-point operations, USB 2.0, gigabit Ethernet, security and NAND Flash interfaces, low power dissipation, and a small footprint, the PowerPC 440EPx embedded processor is ideally suited to a wide range of high-performance networking applications such as those enabled by TeamF1's Secure Gateway Solution. AMCC's Sequoia evaluation kit enables comprehensive evaluation of the AMCC 440EPx processor, while minimizing customers' hardware and software development time.

from directly addressing any of a network's local computers.

- ❖ Port forwarding directs inbound traffic for a particular service to one local server, blocking or allowing specific traffic.

Easy-to-use device management features

- ❖ User friendly browser-based remote web-management simplifies configuration of even the most advanced VPN tunnel schemes.
- ❖ SNMP management enables administrators to remotely monitor and control network devices.
- ❖ A flexible and powerful command line interface (CLI) is provided to configure and monitor a gateway device and automate common tasks.
- ❖ An internal, extensible management framework can be used with techniques such as XML/SOAP.

Gateway options

- ❖ Multiple WAN interfaces of different types: Ethernet, dialup, wireless WAN, etc.
- ❖ Multiple LAN interfaces of different types: Ethernet, WLAN, integrated Ethernet switch, etc.
- ❖ Fully managed features. Device administration features include upgrade capability, traffic monitoring,

logging, and settings management.

- ❖ IEEE 802.11 b/a/g/n Wi-Fi access point features.

Unified Threat Management

TeamF1's Secure Gateway Solution enables OEMs to build fully integrated UTM devices. As a result, end-customers have the tools necessary to carve out security zones and manage security policies in a centralized manner, thereby efficiently controlling network traffic.

- ❖ Service blocking controls specific outbound traffic, e.g. from LAN to WAN and from DMZ port to WAN.
- ❖ Site blocking prevents access to certain sites on the Internet.
- ❖ Blocks specific keywords and domain names for content filtering and parental control.

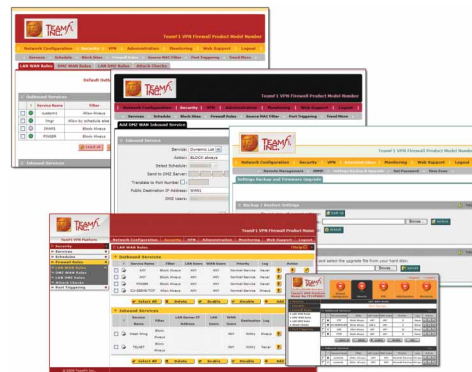


Fig 2: Branding options utilizing multiple skins/themes.

Also Available for AMCC PowerPC Platforms

- ❖ **V-IPSecure**
Network Layer Security
 - ❖ **ASAP**
Air Secure Access Point
 - ❖ **SecureAire Supplicant**
Secure embedded WLAN client
- ❖ Blocks web components Proxy, Java, ActiveX, and cookies to prevent malicious software from being installed inadvertently.
 - ❖ Source MAC filtering secures the network by filtering (dropping) traffic with specified MAC addresses.

Other key features

- ❖ Quality of service (QoS) priority.
- ❖ PPPoE, dynamic and static, available for ISPs worldwide, including PPTP (Austria) and Telestra BigPond (Australia).
- ❖ Static and dynamic routing, including RIPv1 and RIPv2.
- ❖ Performance features. Fast LAN to WAN throughput and VPN tunnel creation and hardware acceleration in AMCC's Turbo Security Engine coprocessor.
- ❖ A comprehensive administration interface.

Aggravation-free branding

TeamF1 offers OEMs different ways to customize, or "brand," the graphical user interfaces (GUIs) of gateway devices. Support for multiple themes, and multiple GUI skins provide GUI design customization, while requiring no code changes or retesting. Advanced user interface control such as additional programming elements like dynamic graphics, Flash, and Java is supported by the flexible management infrastructure.



Email: sales@TeamF1.com, Web: www.TeamF1.com
Ph: +1 (510) 505-9931 ext. 5, Fax: +1 (510) 505-9941



Email: support@amcc.com, Web: http://www.amcc.com/Embedded/
Ph: +1 (800) 840-6055



© 2006-2007 TeamF1, Inc.